

MAKING EUROPE A SAFER PLACE



SERVICE



QUALITY



**LOCAL
BRANCHES**



**LEADING
MANUFACTURER**

WWW.AMS-HOLDINGS.COM

CONTENTS PAGE

DECONTAMINATION SYSTEMS	1
DCU RANGE	2
MODULAR RANGE	3
NEGATIVE PRESSURE UNITS	5
NPU RANGE	5
FUME CABINET	8
WATER MANAGEMENT SYSTEMS	9
WMS RANGE	9
WASTE BOX	11



Decontamination Systems

AMS have manufactured decontamination units since 2000. From our manufacturing base in wigan, we design and build specialist decontamination units to meet a range of requirements.

With a comprehensive range of trailers to fit your individual purpose or particular environment, get in contact today to discuss what AMS can do for you.

We also have a large hire fleet of decontamination units in the UK, so please get in touch if you would prefer to hire a unit today.

AMS DCU RANGE

AMS TINY



The tiny, as the name suggests, is the smallest of our standard range of asbestos decontamination trailers. It is 3.0m long but only 1.5m wide. This unit has a single shower and is ideal for the smaller job.

AMS MINI



The MINI, is 3.0m long but only 2.075m wide. This unit has a single shower and is ideal for the small to medium sized jobs.

AMS ULTRA



The AMS Ultra Decontamination Unit is a lightweight model and even though it is under 750 kg's in weight it has been built with twin showers. Because this model is under 750kgs anyone with a full driver's license can tow this trailer.

AMS EXTRA



The Xtra is a 3.6m twin shower asbestos decontamination trailer with more space for extra comfort and room for an optional generator and water tank should you be working in areas without supplies.

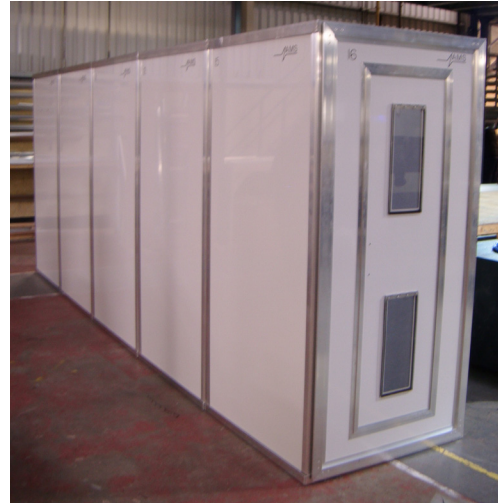
AMS MODULAR RANGE

AMS MODULAR 3 STAGE



This Design is a robust composite panel construction, 6mm thick with white powder coated aluminium skin on both sides with polymer core containing a quality aluminium roof and floor sections with transparent centre section on roof.

AMS MODULAR 5 STAGE



The 5 Stage Modular Shower design is a robust composite panel construction, 6mm thick with white powder coated aluminium skin on both sides with polymer core containing a quality aluminium roof and floor sections with transparent centre section on roof. It is a versatile modular that can have custom amendments made if required.

AMS 2 STAGE MATERIAL LOCK



The 2 Stage Material Lock Design is a robust composite panel construction, 6mm thick with white powder coated aluminium skin on both sides with polymer core containing a quality aluminium roof and floor sections with transparent centre section on roof. Galvanised steel SUB floor sections. Easily fitted together. Allows pallets to be pushed through on pump truck for washing/decontamination.

AMS 3 STAGE MATERIAL LOCK



The 3 Stage Material Lock design is a robust composite panel construction, 6mm thick with white powder coated aluminium skin on both sides with polymer core containing a quality aluminium roof and floor sections with transparent centre section on roof. Galvanised steel SUB floor sections. Easily fitted together. Allows pallets to be pushed through on pump truck for washing/decontamination.

AMS MODULAR RANGE

AMS 2 STAGE MINI MATERIAL LOCK



The 2 Stage MINI Material Lock is a robust composite panel construction, 6mm thick with white powder coated aluminium skin on both sides with polymer core containing a quality aluminium roof and floor sections with transparent centre section on roof. Polypropylene SUB floor sections Easily fitted together, allows smaller items to be decontaminated easier.

TRANSPORTATION



Transportation / storage trolley available.

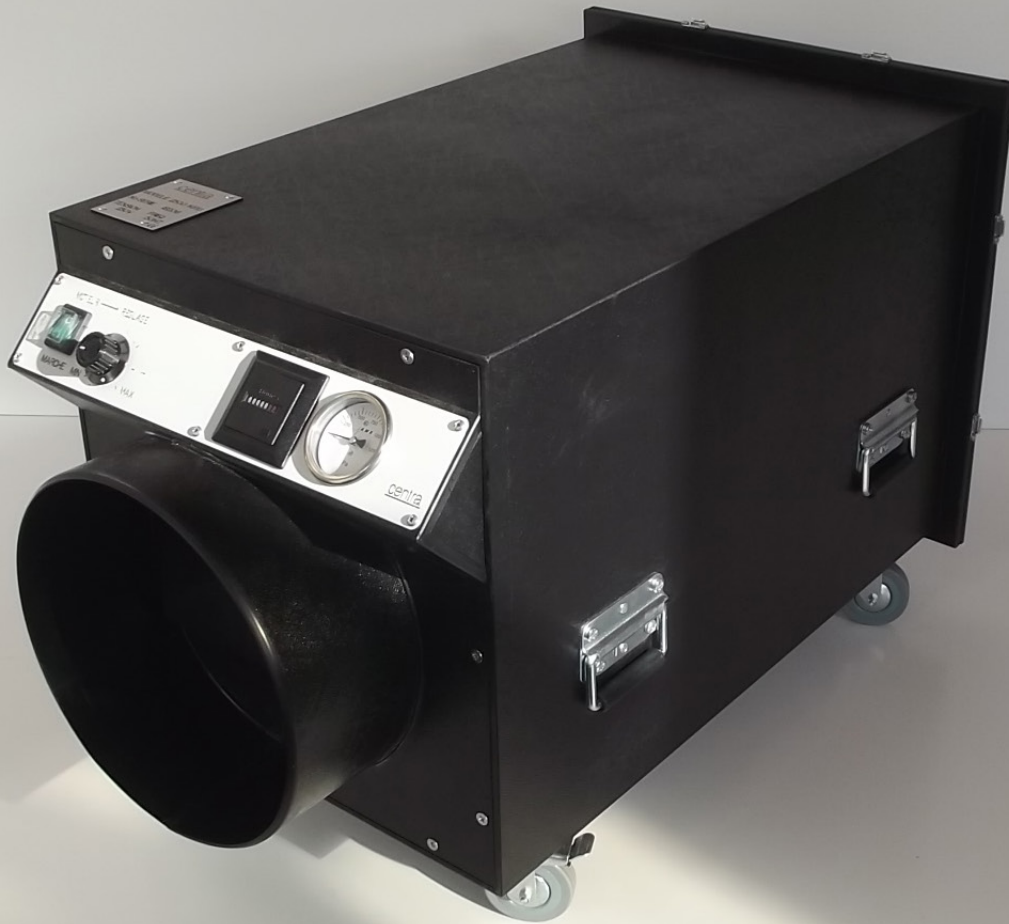
Dimensions:

Length - 2000mm

Width - 850mm

Height - 1200mm

Weight - 65kg



Negative Pressure Units

AMS manufacture a range of "Negative Pressure Units" (NPU's) to provide a powerful filtered air extraction system. The NPU's are mobile, easy to handle, install and operate. All NPU's are manufactured from durable, robust, safe and easy to clean materials.

AMS NPU's are mostly used in the Asbestos Removal Industries in Europe and other countries around the world that apply regulations to safely remove asbestos. The equipment is also used in other industries to control environments where air contamination is a problem, including the nuclear industry.

NPU's are normally attached to a contained area (working enclosure) that is likely to become contaminated during the maintenance or removal work. Extraction of filtered air will provide "Negative Pressure" in the contained area preventing contamination to adjacent areas. In Europe and in other parts of the world it is a regulation to use this equipment during the removal of asbestos materials.

AMS NPU RANGE

PRESSURE MONITOR



The AMS Pressure Monitor has been born after looking at the regulations of Several countries in Europe and bringing them all together to design and build a versatile pressure monitor that performs well in all environments as well as complying with local legislation.

NPU 500



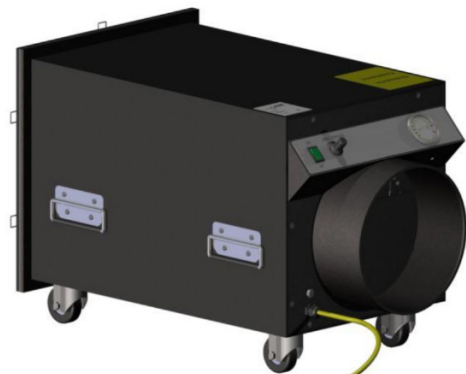
The AMS 500 NPU provides a nominal airflow of 500m³ / hour (refer to test report section 9) with a filtration of 99.995% conforming to BS 8520 regulations. The NPU is compact and lightweight enough to be easily handled by one person and will pass through standard doorways. The design and manufacture of this unit considered and addressed regulation issues as stipulated by BS 8520-2:2009.

NPU 1000



The AMS 1000 NPU provides a nominal airflow of 1300m³ / hour with a filtration of 99.995% conforming to BS 8520 regulations. The NPU is compact and lightweight enough to be easily handled by one person and will pass through standard doorways. The design and manufacture of this unit considered and addressed regulation issues as stipulated by BS 8520-2:2009.

NPU 1500



The AMS 1500 NPU provides a nominal airflow of 2200m³ / hour with a filtration of 99.995% conforming to BS 8520 regulations. The NPU is compact and lightweight enough to be easily handled by one person and will pass through standard doorways. The design and manufacture of this unit considered and addressed regulation issues as stipulated by BS 8520-2:2009.

AMS NPU RANGE

NPU 2000



The AMS 2000 NPU provides a nominal airflow of 2300m³ / hour. All NPU's are manufactured from durable, robust, safe and easy to clean materials. The NPU is compact and lightweight enough to be easily handled by one person and will pass through standard doorways. The design and manufacture of this unit considered and addressed regulation issues as stipulated by BS 8520-2:2009.

NPU 4000



The AMS 4000 NPU provides a nominal airflow of 5266 M³/h with a filtration of 99.995% conforming to BS 8520 regulations. The NPU is compact and lightweight enough to be easily handled by one person and will pass through standard doorways. The design and manufacture of this unit considered and addressed regulation issues as stipulated by BS 8520-2:2009.

NPU 5000



This NPU provides a nominal airflow of 5000m³ /hour with a filtration of 99.995% conforming to PAS 60 regulations. The NPU is compact and lightweight enough to be easily handled by one person and will pass through standard doorways. The design and manufacture of this unit considered and addressed regulation issues as stipulated by PAS 60-2:2004.

NPU 6000



This NPU provides a nominal airflow of 6000 CFM with a filtration of 99.995% conforming to PAS 60 regulations. The NPU is compact and lightweight enough to be easily handled by one person and will pass through standard doorways. The design and manufacture of this unit considered and addressed regulation issues as stipulated by PAS 60-2:2004.

AMS NPU RANGE

NPU 10000



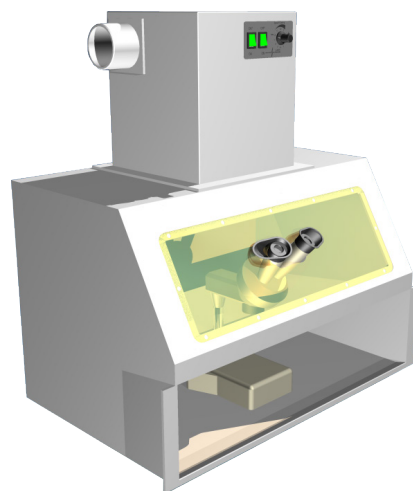
AMS are specialist manufacturers of NPU's and other equipment used for the European asbestos removal industry. All equipment is manufactured to recognised European standards as well as adapted for the specific local requirements of a particular country. The AMS 10000 NPU provides a nominal airflow of 8000m³ / hour.

NPU 24/30 000



AMS are specialist manufacturers of NPU's and other equipment used for the European asbestos removal industry. All equipment is manufactured to recognised European standards as well as adapted for the specific local requirements of a particular country.

AMS MASK FUME CABINET



Years of laboratory use has provided the needed knowledge and experience to develop the AMS Mask fume cabinet that meets all analysing requirements. Features Include: 1) Manufactured from white Polypropylene 2) Robust and Durable 3) Easy to Clean.



Water Management Systems

The fundamental design emphasis of the AMS range of Water Management Systems, specifically the 110 volt and 230 volt units is to provide robust, yet lightweight modules which produces high water flow rates from a compact unit. In particular, the AMS 230 volt Water Management System produces 4.5 Gallons per Minute nominal flow rate, both to and from the shower head of a Decontamination Facility, with 25 and 5 micron filtration. The unit is compact and mobile and can be easily handled by one person. Castors fitted allows unit to be pushed and will pass through standard doorways.

The water management system case is constructed from durable polypropylene, reinforced with welded internal ribs, where necessary.

AMS WMS RANGE

MK 5 Waste



A pumped waste filtration system with twin filtration and remote activation capabilities controlled via a timer switch.

WMS 140L



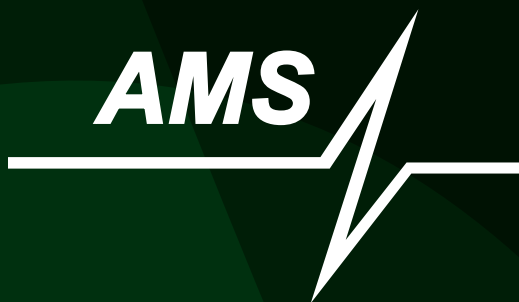
The AMS 230 volt Water Management System produces 4.5 Gallons per Minute nominal flow rate, both to and from the shower head of a Decontamination Facility, with 25 and 5 micron filtration.



Waste Box

An AMS Waste Box fits neatly inside your van, designed to allow hazardous waste to be safely removed from site. Manufactured from polypropylene sheets and built to a standard specification 1200x1200x1590mm. AMS waste boxes are your solution to cost effective removal of unwanted asbestos from site.

Get in contact today to discuss what AMS can do for you on 0191 456 6000 or sales@ams-holdings.com.



0191 456 6000



sales@ams-holdings.com